

## Appendix D Biodiversity Overlay Map

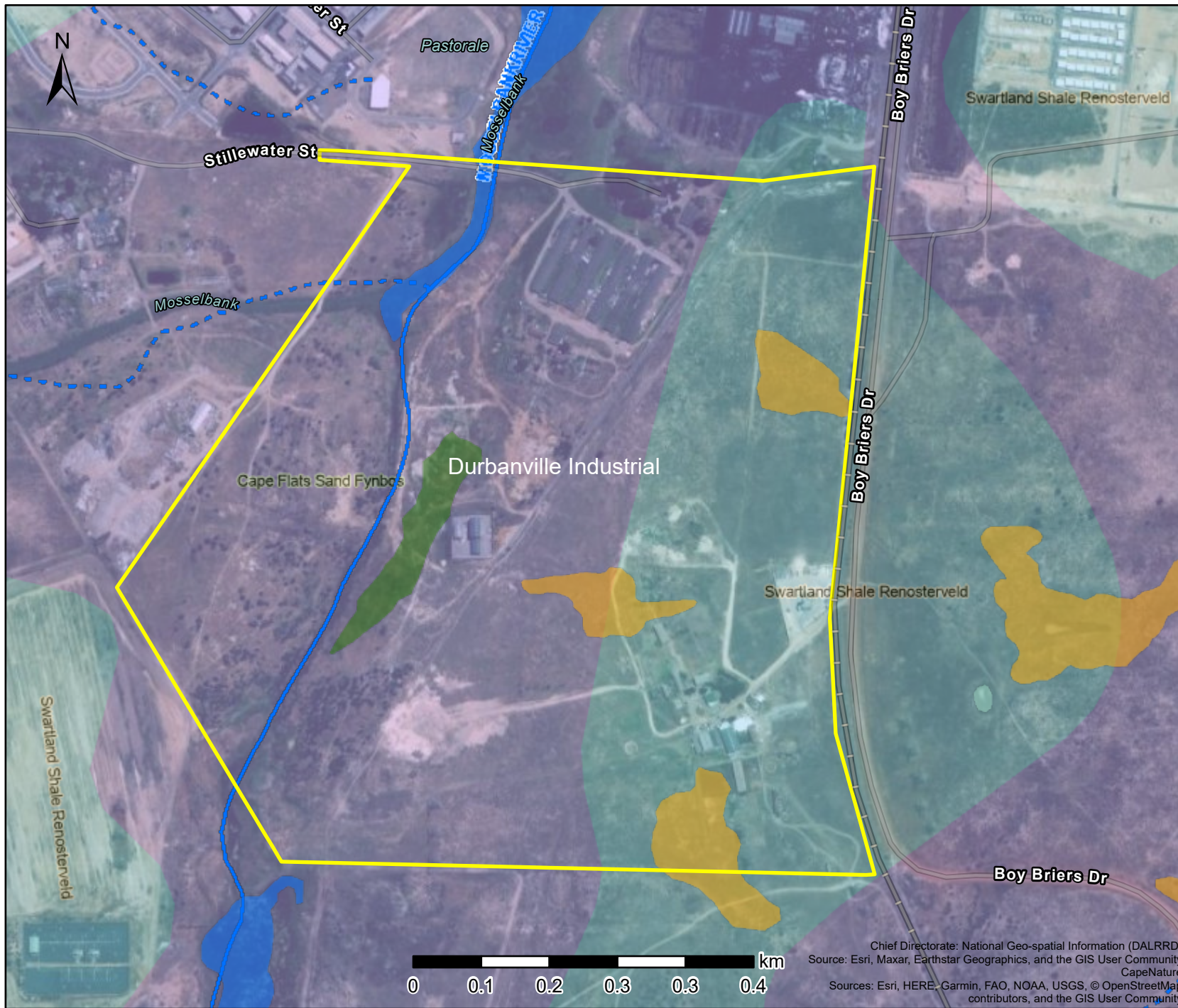
---



 **LEGACY** | ENVIRONMENTAL  
MANAGEMENT  
CONSULTING



# Biodiversity Sensitivities Overlay Map



## Legend

### Wetlands (NWM5)

#### Classification

- Channelled valley-bottom wetland
- Depression wetland
- Floodplain wetland
- Seep wetland

### Rivers

- Perennial
- Non-Perennial

### VEGMAP 2018

- FFd 5 Cape Flats Sand Fynbos
- FRs 9 Swartland Shale Renosterveld

**Map Center:** Lon: 18°42'22.5"E  
Lat: 33°47'59.1"S

**Scale:** 1:8,062

**Date created:** 2023/31/10



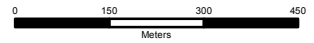
**Western Cape  
Government**  
**FOR YOU**

Chief Directorate: National Geo-spatial Information (DALRRD)  
Source: Esri, Maxar, Earthstar Geographics, and the GIS User Community  
CapeNature  
Sources: Esri, HERE, Garmin, FAO, NOAA, USGS, © OpenStreetMap contributors, and the GIS User Community

# Biodiversity Sensitivity Map



- Legend**
- Canal Lined
  - Channel Open
  - Natural River/Streams
- Biodiversity Network**
- Critical Biodiversity Area category**
- CBA 2 Restorable Irreplaceable site
  - Critically Endangered
  - Greyish, sandy excessively drained soils
- Soils with a marked clay accumulation, strongly structured and a non-reddish colour. In addition one or more of vertic, melanic and
- Wetlands**
- Type**
- Dam (in-channel)
  - Dam (off-channel)
  - Natural and semi-natural
  - Stormwater pond
  - Dam
  - Transformed



1:12 000

Projection: Web Mercator Auxiliary Sphere (WMAS),  
Central Meridian 19° East  
Spheroid: WGS\_1984

Please Note:  
- Every effort has been made to ensure the accuracy of information in this map at the time of publication.  
- The spatial data portrayed in this map is as current, accurate and complete as provided by the various line departments responsible for the maintenance of these datasets.  
- The City of Cape Town accepts no responsibility for, and will not be liable for, any errors or omissions contained herein.

THIS MAP WAS GENERATED BY THE

**City of Cape Town Map Viewer**

Information & Knowledge Management Department

Tel: +27 21 487 2711 Fax: +27 21 487 2821  
[city.maps@capetown.gov.za](mailto:city.maps@capetown.gov.za)  
Date: 2023-08-14

